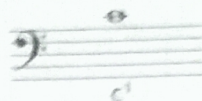


Tenor Clef

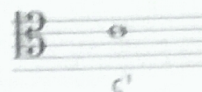


The tenor clef is a C clef. It shows you where the pitch c^1 is notated.

Notation of C in bass clef:



Notation of C in tenor clef:



The tenor clef is used when we have to play pitches that would require too many ledger lines in bass clef. Here is an example:



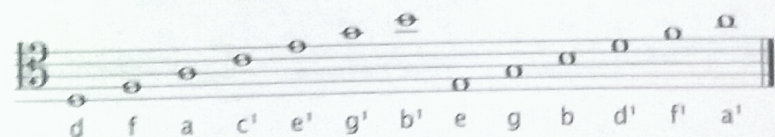
In the tenor clef it would look like this:



When the pitches are really high we sometimes use the treble clef in cello parts. In the treble clef our example would look like this:



The tenor clef is used frequently in cello literature. It is worth your time to learn it well. Don't rely on counting lines and spaces when it occurs. Concentrate on memorizing the notes on the D and A strings:



Maike's Song

Michael Corssen